

BINMASTER

Taking Control . . . To A Higher Level

BINMASTER AIRPAD

AIRPADS on 12" Centers

Length of Sloping Bin Wall	No. of Airpads Per Row
1' 8" - 2' 7"	2
2' 8" - 3' 7"	3
3' 8" - 4' 7"	4
4' 8" - 5' 7"	5
5' 8" - 6' 7"	6
6' 8" - 7' 7"	7
7' 8" - 8' 7"	8
8' 8" - 9' 7"	9
9' 8" - 10' 7"	10

AIRPADS on 15" Centers

Length of Sloping Bin Wall	No. of Airpads Per Row
1' 11" - 3' 1"	2
3' 2" - 4' 4"	3
4' 5" - 5' 7"	4
5' 8" - 6' 10"	5
6' 11" - 8' 1"	6
8' 2" - 9' 4"	7
9' 5" - 10' 7"	8
10' 8" - 11' 10"	9
11' 11" - 13' 1"	10

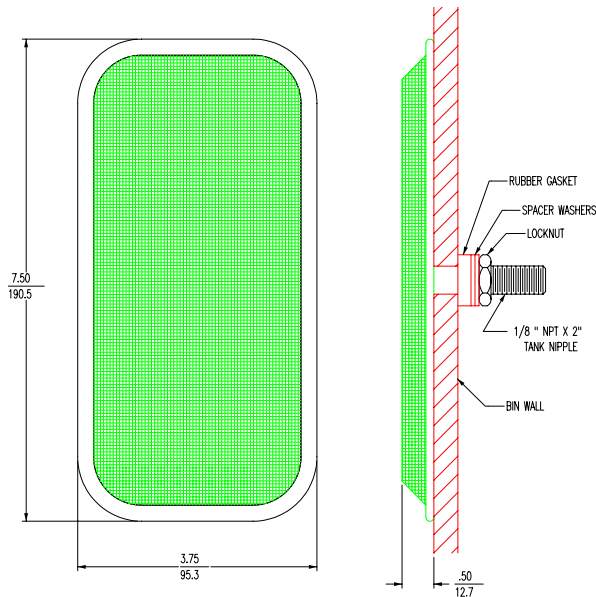
Manifold Piping Size Guide

Piping Size	No. of Airpads in Row
3/4"	1 - 5
1"	6 - 9
1-1/4"	10 - 12

Air Consumption guide Per AIRPAD

Air Pressure P.S.I.	Cubic Feet Per Minute
1	4.2
2	5.7
3	6.5
4	7.1
5	7.6

PHYSICAL SPECIFICATIONS



AIRPAD SELECTION GUIDE

For best results, locate the lower airpads as close to the discharge outlet as possible. If material is held in the bin for a long period or compacted in transport, we recommend airpads be installed on 12" centers.

Generally 4 rows of airpads on 12" or 15" centers are recommended. On conical bins these rows are spaced equally. On pyramidal bins the rows are spaced equally on the sloping sides or in the valleys of the material if the material tends to hang up in these valleys.

AIR SUPPLY

The air supply must be clean and dry. We recommend positive displacement and low pressure blowers. Plant air can be used but the pressure must be reduced to 3 - 5 psi and a filter or moisture trap must be used on the low pressure side. The use of plant air can be a limiting factor due to the volume of air needed.

INSTALLATION

Drill 7/16" holes through the bin wall on the predetermined centers. Insert the special tank nipple through the hole and lock it into place with the locknut. The rubber gasket and spacer washers are furnished.

BINMASTER

Division of Garner Industries
7201 No. 98th Street P. O. Box 29709
Lincoln, NE 68507 Lincoln, NE 68529
(402) 434-9102 Fax (402) 434-9133
www.binmaster.com